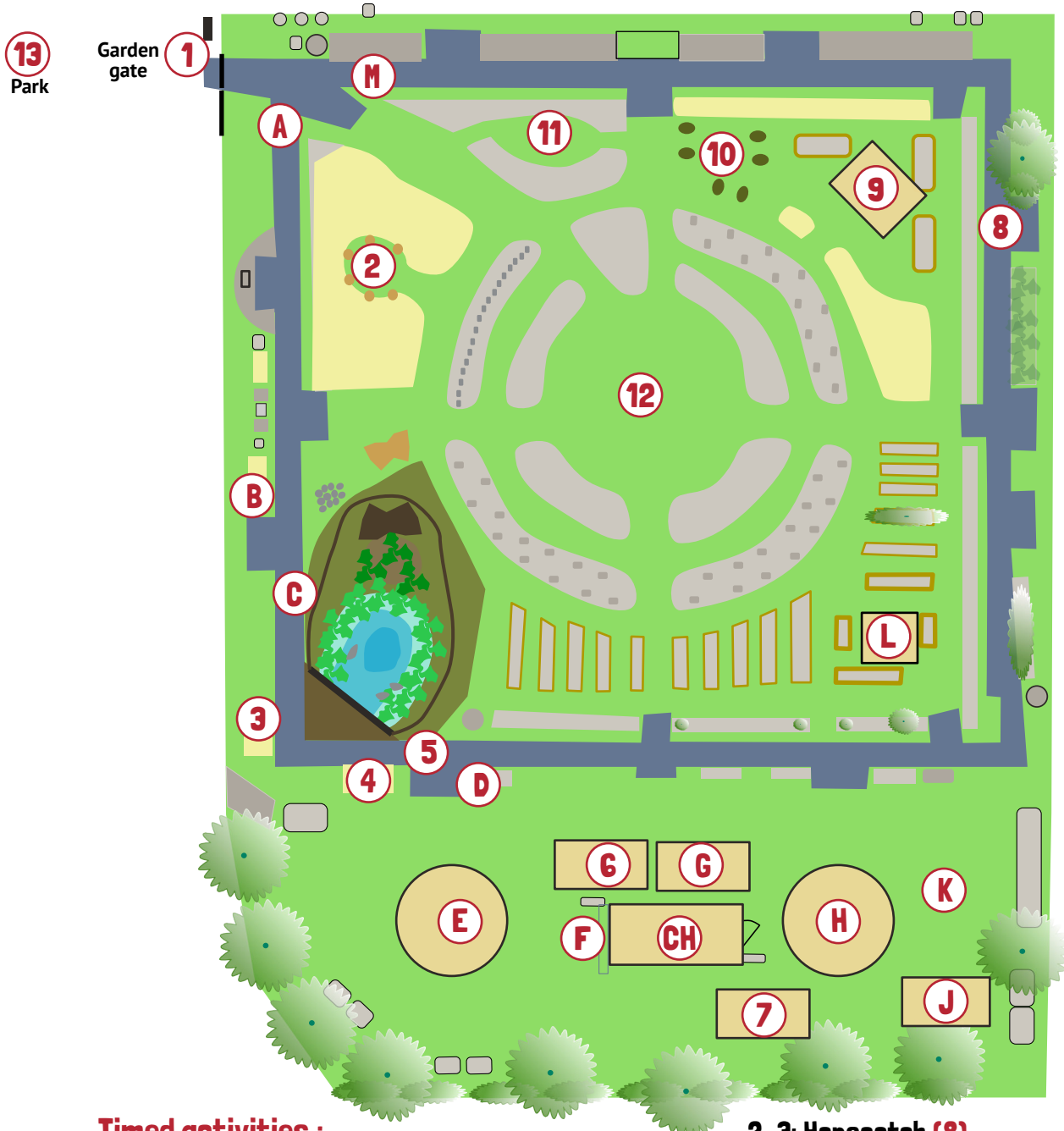


Queen Edith's FunPalace: Programme and map of locations



Timed activities :

- 10–11: Autumn moths (12)
- 10.30–1.30: Making a magic carpet (9)
- 11–1: Genetics graffiti (4 & 5)
- 11–12.30: Giant bubbles (11)
- 11.30–12: Spiral yoga (12)
- 11–12: Rock painting (H)
- 11–4: Decorate Our Palace (H)
- 12–12.30: Nerf guns (2)
- 12–12.45: Indian cooking (7)
- 12.30–3.30: Cells in the spotlight (6)
- 1–3: Capturing Queen Edith's – history (3)
- 1–2ish: Fossils, gems and skeletons (7)
- 1–3: Making maps with Kettle's Yard (11)
- 1–3: Garden sketching (3)
- 1–1.30: Storytelling (10)
- 2–3: Social walk (meet at garden gate: 1)
- 2–2.30: Bottle rockets (in the park: 13)

2–3: Hopscotch (8)

2–4: Pine-cone monsters (9)

3–4: Acoustic chillout (10)

Most of the day:

- A. Hello! Chalking your name
- B. Unlikely words (from E)
- C. Voices from the garden (from E)
- D. Trees of... (from E)
- E. WordPalace
- F. Cento poems (from E)
- G. Fun with DNA
- H. ArtPalace – decorating
- CH. Refreshments
- J. String and knots
- K. Our Palace – to decorate
- L. WoodPalace – spoon carving
- M. Goodbye!