





**CAMBRIDGE  
COOKERY**  
BISTRO & CAFÉ

## Your Neighbourhood Menu



*Fresh homemade cakes, pastries and breads served with the best coffee in Cambridge*

\*\*\*\*



*Delicious food cooked throughout the day using locally sourced, seasonal, organic ingredients*

\*\*\*\*



*Local, organic, contemporary Saturday evening bistro menu, cocktails, hand picked wines and craft beers*

Homerton Gardens, Purbeck Road, CB2 8EB  
01223 247620

www.cambridgecookery.com  
info@cambridgecookery.com

ccookeryschool / ccscafe\_

## FROM THE EDITOR

This is a very special issue of *Queen Edith's Community News*, as it features our first ever local business directory.

Along with some enthusiastic Hills Road Sixth Form College students, I've spent the past few months traipsing the streets making sure that every business we can see is featured. The listings start on page 9. Next year we'd like to include more businesses without shop fronts: builders, accountants, electricians, cleaners, gardeners and more. If you'd like to be listed, fill in your details *today* at our [queen-ediths.info](http://queen-ediths.info) website. You'll never get any better free advertising.



We've traditionally defined the Queen Edith's area in relation to the council wards, but the councils do love to redraw the boundaries, and that makes things confusing. That's why on the sound advice of our resident historian Roger Lilley we've decided to re-define our area with reference to the far more stable church parish boundaries of St John the Evangelist and St James. That makes us just a little bit larger, and you'll notice on the front cover that we now include Flamsteed Road, Kelvin Close, Laundry Lane, Derwent Close, Ainsdale and Tweedale. If you live in those roads, welcome to the Queen Edith's Community Forum area! There's a map on the [queen-ediths.info](http://queen-ediths.info) website too.

Once again, I'd like to thank the many local businesses who have stepped up to support *Queen Edith's Community News* and to make it Cambridge's biggest and best neighbourhood publication. Do support all the advertisers you see in the issue: Cambridge Cookery Bistro & Café, Cambridge Print & Copy, DS Electrical, Tylers, Cambridge Junction, Hill, Shortle ProClean, Express General Store and the Taj Tandoori. We love you all. If any business wants to support us next year, starting at just £75, just get in touch at [hello@queen-ediths.info](mailto:hello@queen-ediths.info).

**Chris Rand**

# How do we keep things moving?

There's a highly significant planning issue coming to our doorstep early in 2018. As some of you may already be aware, the Greater Cambridge Partnership (GCP, previously known as the City Deal) is looking at proposals to improve sustainable transport access to Addenbrooke's and the Biomedical Campus from the south: the so-called 'A1307 Three Campuses to Cambridge' project.

With an expected 28,000 employees working on the Biomedical Campus by mid-2020s, it is imperative that new transport solutions are found before the south of the city grinds to a halt. The proposed Cambridge South station (expected possibly as early as 2022) is one part of the answer, but the GCP also wants to improve bus and cycle links too.

Queen Edith's Community Forum Chair Sam Davies has taken part in the Local Liaison Forum and also been in contact with various residents' associations, our counterparts in Trumpington, and the Parish Councils in Stapleford and Great Shelford. She says: "It is really important that Queen Edith's residents are fully informed about the proposals, because our area is the funnel through which much



An 'off road bus route' connecting the Biomedical Campus with the Park & Ride is under consideration

of the Biomedical Campus traffic pours. Our quality of life is so dependent on the effective management of its growth."

In February the Community Forum is planning to run a briefing on the A1307 plans for residents, and we encourage you to come along and ask questions of the GCP project team so you can understand the implications of each of the three strategies under discussion. To make sure you get details, sign up for our 'What's On' email at the [queen-ediths.info](http://queen-ediths.info) website. You can find a summary of the current proposals there too. ■

Queen Edith's COMMUNITY FORUM

2 pm: Queen Edith's Chapel, Wulfstan Way  
Christmas warm-up - with community cafe,  
live music, pop-up choir and raffle

## QUEEN EDITH'S CHRISTMAS FESTIVAL

### SATURDAY 9 DECEMBER 2017

FREE!  
ALL WELCOME

4 pm: by Wulfstan Way shops  
Switching on the Xmas tree lights,  
carols and Santa

For details visit: [queen-ediths.info](http://queen-ediths.info)

● This year's Queen Edith's Christmas Festival will be taking place on Saturday 9 December. We'll be running a community café with music (including a 'pop-up' choir) and children's activities between 2pm and 4pm at Queen Edith's Chapel on Wulfstan Way. At 4pm we'll make our way over to the Christmas tree outside the Wulfstan Way

Shops for some carolling with the choir of St James' Church before Cambridge Mayor George Pippas turns on the lights and Father Christmas arrives with small presents for children. Come along at any time, and bring the family! All the activities are free and we look forward to welcoming as many local people as possible.

# A better park ...and other green activities



The Garden at Nightingale Park – an ideal meeting place for the community

**N**ightingale Park is set to see more improvements in 2018. Back in December 2015, the park was awarded three developer-levy funds: for the community garden (completed this February); to upgrade the playground; and to rebuild the pavilion and toilets.

Queen Edith's Community Forum volunteers have been involved in all three projects, liaising with Council officers and elected councillors,

listening to park users' views, and sharing updates. In Autumn 2017, the City Council held an open consultation about the playground. Volunteers and local councillors also gathered opinion. Work to install new equipment is expected to start early in 2018, with access improvements, including to the car park, and repairs to the existing kit.

## Designs for a new pavilion

In the next few months, we should all have the opportunity to comment on designs for the new pavilion building and its surrounds. This will be as a formal planning application. The plan is to demolish the existing building in about April 2018 and build over the summer.

Public toilets will be part of the new build but provision during the construction is being considered by the Streets and Open Spaces team. We are pressing for there to be no interruption to toilet facilities during that time, knowing they are essential for people of all ages to enjoy the park.

The pavilion will be designed to support team games, especially local mini and youth team football, and will have Sports England-compliant facilities. It should also have an attractive multi-use community room and kitchenette – with views of the park.

Let us know how you would like to use this new community space, which will be available to local residents and community groups. ■

Email: [hello@queen-ediths.info](mailto:hello@queen-ediths.info)



The community garden at Rock Road Library

## Queen Edith's IN BLOOM

Queen Edith's in Bloom volunteers continue to keep the new gardens by the Wulfstan Way shops (reasonably!) tidy – and have recently planted some winter bedding plants and Spring and Summer bulbs. Some of these were bought with the cash collection at the Community Action Morning in September and some were donated by the City Council Streets and Open Space staff, including ones re-homed from local roundabouts and bedding displays in the Spring. Nothing goes to waste in Queen Edith's!

We have plans to 'plant' a bench by the new care agency too. We could plant up the side by the take-away too but will need to recruit more volunteers first – it will be too much for the 'hardy three', who are also looking after lots of other gardens locally. Do contact us if you'd like to get involved.

## School Gardening

Since Summer 2017, our volunteers have been collaborating with volunteers and staff from Queen Edith's Primary School to make a new school garden by the Year 3 portakabin. This will support the curriculum and also make a pleasant biodiverse place for staff to enjoy their lunchbreaks. Come and see our progress at the next school fete!

Rock Road Library has a delightful community garden (see photo opposite), run by a group of volunteers. The garden is enjoyed by library users, and is also a venue for community events. Gardening sessions are on Monday and Friday mornings, scheduled throughout the year as needed. More gardeners are required! Contact the Friends of Rock Road Library if you're interested – the details are at our [queen-ediths.info](http://queen-ediths.info) website. You don't need to be an expert gardener but it helps if you have some experience of gardening and can be contacted by email.

YOUR LOCAL PRINTER SINCE 2003

CHRISTMAS  
PRINTING

WITH THIS ADVERT...

20% OFF!

CHRISTMAS CARDS  
CALENDARS  
CANVAS PRINTS  
(A PRESENT FOR GRANNY!)

ALL PERSONALISED WITH YOUR OWN IMAGE

NO JOB TOO SMALL

LAST ORDERS 20TH DECEMBER



01223 211554  
WWW.PRINTANDCOPY.NET  
ACTION@PRINTANDCOPY.NET

CAMBRIDGE  
PRINT  
& COPY

35 CLIFTON ROAD, CAMBRIDGE, CB1 7ED



Looking for local, reliable electricians in Queen Edith's? You've found us.

DS Electrical are your local domestic electricians just around the corner, ready for any electrical work in the home. With over 20 years of experience in the trade, we can boast many satisfied local residents who come back to us time and again.

07830 349 199 • [info@ds-electricalservice.co.uk](mailto:info@ds-electricalservice.co.uk)

DS ELECTRICAL  
Professional Domestic  
& Commercial Electricians

## CLASSES & CLUBS IN QUEEN EDITH'S

Due to the overwhelming response, we've had to put the detailed information about the classes and clubs running locally on the [queen-ediths.info](http://queen-ediths.info) website. However, here's a list of what you'll find on the website, which has all the contact information.

### Active Lives Physical & Mental Wellbeing

Monday, Wednesday, Thursday, Friday  
Nightingale Park

### Rebecca's After School Children's Art Club

Monday, Tuesday, Wednesday • Hills Avenue

### Blinco Bridge Club

Monday evenings  
Lichfield Community Hall

### Cambridge Guitar Courses

Thursday evenings  
St James Centre

### Cambridge Schools of Taekwon-Do

Thursday evenings Juniors aged 7 and up, Adults  
Morley Memorial Primary School

### Campus Sound A Capella Singing

Monday evenings  
Addenbrooke's Hospital

### Chatty Caterpillars Toddler Group

Thursday  
St. John's Church

### Children's Computer Club

Monday to Saturday • Tech Studio, Adkins Corner

### Forever Active Strength & Balance Class

Wednesday mornings  
Lichfield Community Hall  
Thursday mornings  
Hills Road Sports Centre  
Thursday lunchtimes  
Queen Edith Chapel

### Gin Club

First Tuesday evening of every month • Cambridge Wine Merchants

### Hills Road Adult Education

Monday to Friday evenings  
Hills Road Sixth Form College

### Informal Woodcarving

Thursday evenings  
The Violin Workshop

### Knitting Group

Wednesday afternoons  
St. John's Church

### Lasers Bible Club

Fridays  
Queen Edith Chapel

### Lean Machine HIIT Fitness Class

Monday, Wednesday and Friday, 6:30am • Queen Edith Primary School

### MAUL: Martial Arts Uniting Ladies

Tuesday and Friday evenings • Queen Edith Primary School

### Nightingale Garden Volunteers

Sunday and Monday afternoons

### Pilates, Yoga, Tai Chi

Weekdays and weekends  
Lichfield Community Hall

### SAS Youth Group

Sunday evenings  
Queen Edith Chapel

### Toddle Along Pre-School Play & Crafts

Monday mornings  
St. John's Church

### Water Colour Tuition

Monday afternoons, Thursday mornings and afternoons  
The Violin Workshop

### Yoga

Monday evenings • Morley Memorial Primary School  
Tuesday mornings and Wednesday evenings  
Community Hall

## Making streets less of a draw for commuters



### The Residents Parking Scheme in the Morley School area is now complete.

It's taken over 15 years of requests by residents to get it established, but parking in this area is now for permit holders only between 10am

and 7pm on Monday to Friday. Amanda Taylor, County Councillor for Queen Edith's, tells us that many more roads have asked for similar problems to be addressed. The council has now decided that the whole city should have the option of residents parking, and is talking to residents area by area.

One of the first such consultations is under way, in an area designated 'Coleridge West'. This includes Clifton Road, Rustat Road, Fanshawe Road and Derby Road, as well as a stretch of Cherry Hinton Road. All residents there should have received information and have been given the chance to give their opinions.

There are also numerous sets of yellow lines either being planned, or actually under way, including in Netherhall Way, Chalk Grove, Beaumont Road and Cavendish Avenue.

If you have any comments or questions, you can find Councillor Taylor's contact details on the [queen-ediths.info](http://queen-ediths.info) website, or details of where to meet our local councillors are on page 15. ■

## Wort's Causeway housing update

### The City Council's proposed Local Plan until 2031 includes significant housing developments on Wort's Causeway.

Many local residents have been attending the hearings that have taken place during the three years it has taken to examine the plan. We had hoped to be able to include an update in this issue, but unfortunately the government inspector assessing the soundness of the plan has still not published her findings, so we are none the wiser.

A letter from the inspectors to Cambridge City Council and South Cambs District Council on 15 November said that "we cannot rule out the need to revisit issues as we progress with the writing of our reports" and that "the Examination remains open until the Councils receive our reports."

As soon as there is news, we will post a summary on the [queen-ediths.info](http://queen-ediths.info) website, so do ensure that you are on our mailing list (see page 15). ■



## Queen Edith's Local, Independent Estate Agent.

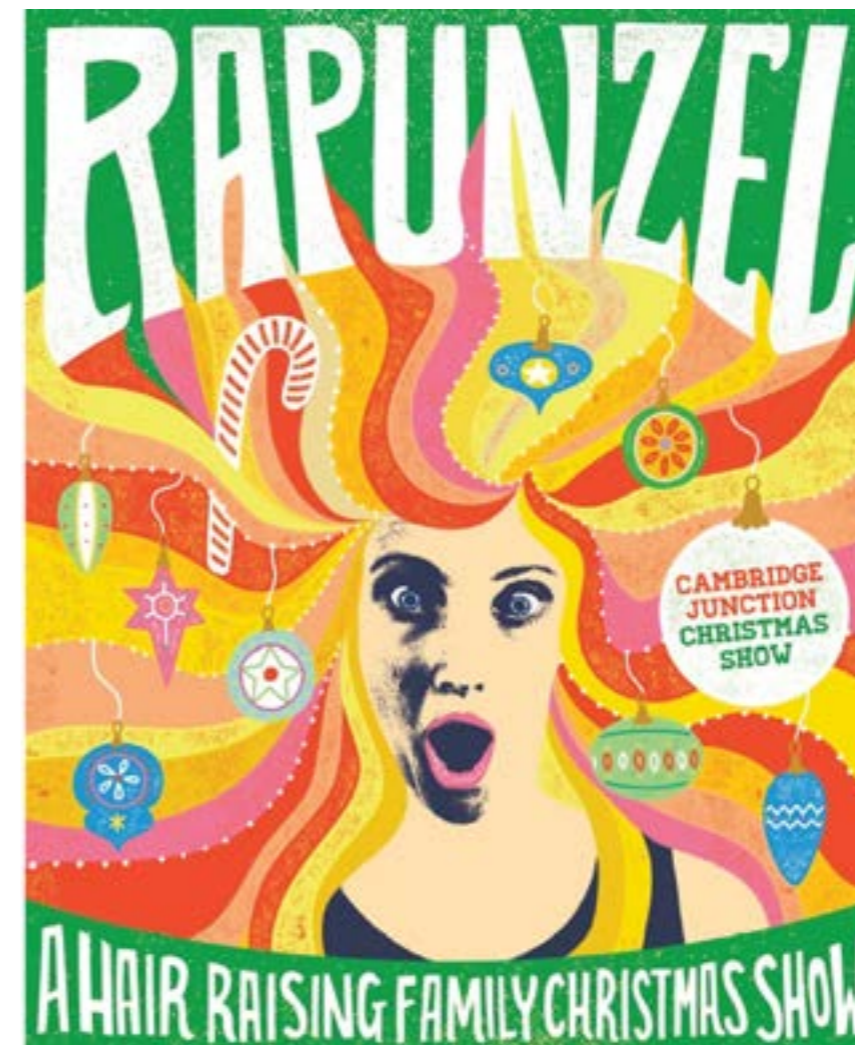
Pop in for a coffee and a chat at our Cherry Hinton Road shop. We'll get to know you, and you'll get to know why the best choice is Tylers.

**10% off sales fees, or 2 months' free management for landlords for Queen Edith's Community News readers.**

[tylers.net](http://tylers.net)

104 Cherry Hinton Road • 01223 214 400

Read our '10 Promises To You' Charter on our website



## CAMBRIDGE JUNCTION

## CHRISTMAS SHOW

05 - 31 DECEMBER

TICKETS FROM £10

RECOMMENDED FOR EVERYONE AGED 5+

[JUNCTION.CO.UK](http://JUNCTION.CO.UK)

SEE WEBSITE FOR FULL DETAILS INCLUDING SCHOOL, RELAXED AND BSL INTERPRETED PERFORMANCES.

# Life is so easy at Ninewells

After years of searching for a family home in Cambridge, Karen and Dr Karel Wildschut had all but given up hope of finding somewhere rural but commutable and close to their two children's schools. It was only when they happened upon Ninewells, the award winning development by Hill and Bushmead Homes, that they found their dream home.

Karen, a Therapy Radiographer in the Medical Physics department at Addenbrookes, said: "Having lived in the New Forest for many years, relocating to Cambridge for work was a great opportunity, but also a big change, as we were used to being surrounded by green and beautiful landscapes. We ended up renting for a couple of years while we searched for somewhere that combined a rural feel with an easy commute for work and the school run. We had come close to buying a couple of properties although sadly they didn't quite tick all the boxes, until we arrived at Ninewells."

## Intriguing and Beautiful

"Our first impression was – wow! It is so open and beautifully landscaped. The architecture of buildings is also really intriguing and beautiful; they're like nothing we had seen on the market. We knew immediately that we had to live here and we've never looked back."

The Wildschut family bought a contemporary three bedroom apartment at the development earlier this year. All of the apartments at Ninewells benefit from floor-to-ceiling windows, which flood the living space with light and seamlessly connect the stylish interiors with the glass-screened balcony areas and terraces. Each apartment includes a contemporary high gloss kitchen, integrated Bosch appliances and underfloor heating throughout.



Karen continues: "Life is just so easy at Ninewells. The property is designed with family life at its core, so it is incredibly functional as well as being beautiful to look at. While we had initially intended to buy a bigger property, there is a huge amount of space and the design is very clever so you feel like you can get away from people and have quiet moments – which is ideal for our older children! Because we are so close to everything, it is also a very social house for the kids and we just love the neighbours too, everyone is so friendly."

## Recent Art Developments

There are a number of art installations across the development, with the most recent piece named Cluster. Created by artist Laura Ellen Bacon using British Oak and manipulated using her hands and steam-bending techniques, it takes on the appearance of branches or grass blowing in the breeze, which Bacon hopes will intrigue passing residents.

The most recent properties to launch at Ninewells include 16 stylish two bedroom apartments and 14 spacious four and five bedroom family homes. The two bedroom apartments are available from £430,000 and the four bedroom houses start from £720,000.

● More at [ninewells-cambridge.co.uk](http://ninewells-cambridge.co.uk)



Advertisement feature.  
Hill is a supporter of the Queen Edith's Community Forum.

# Queen Edith's Business Directory 2018

Here it is: our listing of the many businesses you'll find in our area – you don't have to take a trip into the city centre! We'll keep updates on [queen-ediths.info](http://queen-ediths.info) where there are also one-click links to all the relevant websites (@) and Facebook pages (f).  
Do please support our local shops, restaurants and businesses. Keep Queen Edith's thriving!

## INTERESTING & USEFUL SHOPS

### Ace Fire and Security

Intruder Alarms, Fire Alarms  
Cherry Hinton Road  
01223 789 700  
Mon – Fri 9 to 5 @ f

### CH Barker (Carpets)

Carpets, Vinyl Floors  
Cherry Hinton Road  
01223 248 243  
Mon – Sat 9 to 5.30

### Florstor

Carpets, Vinyl Floors  
Adkins Corner  
01223 213 307  
Mon – Fri 9 to 5.30, Sat 9 to 4 @

### Gilroy Interiors

Blinds, Curtains  
Cherry Hinton Road  
01223 320 288  
Tue – Sat 10 to 5 @

### Go Glass (Cambridge)

Mirrors, Doors, Glass Products  
Cherry Hinton Road  
01223 211 041  
Mon – Thu 8.30 to 5.30, Fri 8.30 to 5,  
Sat 8.30 to 12 noon @ f

### Hughes TV and Audio

Electrical Appliances  
Cherry Hinton Road  
01223 245 005  
Mon – Sat 9 to 5 @

### Inner Sanctum Collectibles

Gaming and Collectible Products  
Hills Road  
01223 240 333  
Mon – Sat 10 to 6 @ f

### Mia Sposa

Bridal Studio  
Hills Road  
01223 213 770  
Tue – Fri 10 to 5.30, Sat 9.30 to 5.30 @ f

### Nisbets

Kitchen and Catering Equipment  
Hills Road  
01223 979 972  
Mon – Sat 9 to 5.30 @

### The Body Shop

Hair and Beauty Products  
Addenbrooke's Hospital  
01223 210 293  
Mon – Fri 9am to 5.30, Sat 12.30 to 5.30,  
Sun 12 to 5.30 @

### The Stock Shop

Ladies Fashion  
Addenbrooke's Hospital  
01223 243 865  
Mon – Fri 9 to 7, Sat – Sun 11 to 5.30 @

### The Stock Shop

Hair and Beauty Products  
Addenbrooke's Hospital • 01223  
240 746  
Mon – Fri 9 to 7, Sat – Sun 11 to 5.30 @

## VENUES

### Cambridge Junction

Arts Venue  
Cambridge Leisure  
01223 511 511  
Mon – Sat 10 to 6 (Box Office) @ f  
See advertisement on page 7

### Clip 'n Climb Cambridge

Climbing Centre  
Clifton Road • 01223 941 700  
Mon – Fri 9 or 2.30 to 9,  
Sat – Sun 9 to 8.30 @ f

### Crossfit Cambridgeshire

Gym  
Clifton Road  
01223 750 758  
6.30am to 9pm, every day @ f

### PureGym

Gym  
Cambridge Leisure  
0845 030 5890  
24 hours/day, every day @

### Tenpin Cambridge

Bowling and Amusements  
Cambridge Leisure  
0871 221 0000  
Mon – Fri 11 to 12 midnight,  
Sat – Sun 10 to 12 midnight @ f

### The Light

Cinema  
Cambridge Leisure  
01223 612 210  
10 to 12 midnight, every day @ f

The Project Manager at Ninewells, Nigel Wheby, has been awarded a *Seal of Excellence* award at the NHBC Pride in the Job Awards. These awards celebrate the exceptional contribution that site managers make in creating homes of outstanding quality. Individuals are assessed on their consistent high standards of workmanship, attention to detail, leadership skills and technical expertise. Congratulations to Nigel and the Ninewells team!



## HAIR & BEAUTY

### Alluring Beauty

Nail Salon  
**Cherry Hinton Road**  
**07963 526287**  
 Tue 9 to 7, Wed 9 to 5, Thu 9 to 7,  
 Fri – Sat 9 to 5



### Aura Hairworks

Hair and Beauty Salon  
**Cherry Hinton Road**  
**01223 211 172**  
 Mon – Tue 9 to 6, Thu 9 to 7,  
 Fri – Sat 9 to 6

### Eddie's Barber Shop

Barbers  
**Cherry Hinton Road**  
**01223 246 767**  
 Mon 8 to 6, Tue 8 to 7, Wed – Fri 8 to 6,  
 Sat 8 to 5

### Elajé Hair and Beauty

Hair and Beauty Salon  
**Hills Road • 01223 244 888**  
 Mon 9.45 to 6, Tue – Thu 8 to 8, Fri 8 to 7,  
 Sat 8 to 4.30, Sun 10 to 3



### Elem Hair

Hair and Beauty Salon  
**Cherry Hinton Road**  
**01223 778 488**  
 Mon 10 to 7, Tue 11 to 9, Wed 10 to 7,  
 Thu 10 to 9, Fri 10 to 7, Sat 8.30 to 5



### Ferdy's Hair & Beauty

Hair and Beauty Salon  
**Cherry Hinton Road**  
**01223 666 284**  
 Tue – Wed 9 to 5.30, Thu 9 to 7,  
 Fri 9 to 5, Sat 9 to 6



### Hair Depot

Hair Salon  
**Addenbrooke's Hospital**  
**01223 211 526 Ext 2360**  
 Mon – Wed 9 to 6, Thu 8 to 6, Fri 8 to 7,  
 Sat 9 to 4.30



### Rogue Barber

Barbers  
**Cherry Hinton Road**  
**01223 971 212**  
 Mon – Tue 10 to 6, Wed – Thu 10 to 8,  
 Fri 10 to 6, Sat 8.30 to 3



### Salon Services

Hair and Beauty Products  
 Wholesale  
**Clifton Road • 01223 240 303**  
 Mon 8.30 to 8, Tue – Sat 8.30 to 6,  
 Sun 10 to 4



### YOLO Hair Design & Beauty

Hair and Beauty Salon  
**Wulfstan Way Shops**  
**01223 241 627**  
 Mon 10 to 7, Tue 9 to 5.30, Wed 9 to 5,  
 Thu 9 to 5.30, Fri 10 to 6, Sat 9 to 5



## ESTATE AGENTS

### Carter Jonas

Estate Agents, Lettings  
**Hills Road • 01223 634 289**  
 Mon – Fri 9 to 6, Sat 9 to 4



### Cheffins

Auctioneers, Valuers, Surveyors,  
 Estate Agents  
**Clifton Road • 01223 213 343**  
 Mon – Fri 9 to 5.30, Sat 9 to 4,  
 Sun 10 to 2



### Leaders

Estate Agents, Lettings  
**Hills Road • 01223 631 894**  
 Mon – Fri 9 to 6, Sat 9 to 4



### Tylers

Estate Agents, Lettings  
**Cherry Hinton Road**  
**01223 214 400**  
 Mon – Fri 9 to 6, Sat 9 to 4



See advertisement on page 7

All entries in this directory  
 have been included free of  
 charge. To appear in future  
 editions, please email  
[hello@queen-ediths.info](mailto:hello@queen-ediths.info)

## TRADE, KITCHENS & BUILDING PRODUCTS

### Benchmark

Kitchens  
**Clifton Road • 01223 213 897**  
 Mon – Fri 7.30 to 5, Sat 8 to 12 noon



### BEW Electrical Distributors

Electrical Wholesale  
**The Paddocks • 01223 214 526**  
 Mon – Fri 7 to 5



### Brandon Hire

Tool Hire  
**Clifton Road • 01223 212 648**  
 Mon – Fri 7 to 5, Sat 8 to 12 noon



### Brewers Decorator Centres

Paints, Wallpaper, Decorating  
 Supplies  
**Clifton Road • 01223 411 420**  
 Mon – Fri 7 to 5, Sat 8 to 5



### By Design

Kitchens, Bathrooms  
**Clifton Road • 01223 248 409**  
 Mon – Fri 9.30 to 5.30, Sat 9.30 to 5



### CEF City Electrical Factors

Electrical Wholesale  
**Clifton Road • 01223 213 013**  
 Mon – Fri 7.30 to 5.30, Sat 8 to noon



### Dean and Wood

Refrigeration and Air Conditioning  
**Clifton Road • 01223 416 695**  
 Mon – Fri 8 to 5



### Electric Center

Electrical Wholesale  
**Clifton Road • 01223 214 922**  
 Mon – Fri 7 to 5.30, Sat 8 to 12 noon



### Eurocell

Fascias, Soffits, Guttering  
**Clifton Road • 01223 244 968**  
 Mon – Fri 8 to 5, Sat 8 to 12 noon



### Howdens

Kitchens  
**Clifton Road • 01223 791 100**  
 Mon – Fri 7.30 to 5, Sat 8 to 12 noon



### HSS Hire

Tool Hire  
**Clifton Road • 01223 646 009**  
 Mon – Fri 7 to 5.30, Sat 8 to 1



### Medlock Electrical Distributors

Electrical Wholesale  
**Clifton Road • 01223 866 490**  
 Mon – Fri 9 to 5



### Plumb Center

Plumbing Supplies  
**Clifton Road • 01223 410 164**  
 Mon – Fri 7.30 to 5, Sat 8 to 12 noon



### Plumb City

Plumbing Supplies  
**Clifton Road • 01223 241 545**  
 Mon – Fri 7.30 to 5, Sat 8 to 12 noon



### Plumbase

Plumbing Supplies  
**Clifton Road • 01223 214 421**  
 Mon – Fri 7 to 5, Sat 8 to 12 noon



### PlumbStock

Plumbing Supplies  
**Clifton Road • 01223 411 622**  
 Mon – Fri 7 to 5, Sat 8 to 12 noon



### PTS Plumbing Trade Supplies

Plumbing Supplies  
**Clifton Road • 01223 210 100**  
 Mon – Fri 7 to 5.30, Sat 8 to 12 noon



### Screwfix

Tools, Building Supplies  
**Clifton Road • 03330 112 112**  
 Mon – Fri 7 to 8, Sat 7 to 6, Sun 9 to 4



### TLC

Electrical Wholesale  
**Clifton Road • 01223 211 655**  
 Mon – Fri 7.30 to 5.30, Sat 9 to 12.30



### Toolstation

Tools, Building Supplies  
**Clifton Road • 0808 100 7211**  
 Mon – Sat 7 to 7, Sun 9 to 4



### WF Senate

Electrical Wholesale  
**Clifton Road • 01223 212 603**  
 Mon – Fri 8 to 5, Sat 8 to 12 noon



## FOR CYCLISTS AND MOTORISTS

### Auto Windscreens

Windscreens Replacement  
**Clifton Road • 01223 245 700**  
 Mon – Fri 8 to 5, Sat 8.30 to 12.30



### Barrys Service Centre

Car Servicing, Tyres, Exhausts  
**The Paddocks • 01223 410 008**  
 Mon – Fri 8.30 to 5.30,  
 Sat 8.30 to 12 noon

### Blazing Saddles

Bicycle Sales, Service  
**Cherry Hinton Road • 01223 415 367**  
 Mon – Wed 8 to 5.30, Thu 8 to 1,  
 Fri 8 to 5.30, Sat 9 to 1



### Cambridge Performance Tyres/Protyre

Car Tyres, Servicing  
**Clifton Road • 01223 411 441**  
 Mon – Fri 8.30 to 5.30, Sat 8.30 to 3



### Cambridge TPS

VW Group Trade Parts  
**Clifton Road • 01223 219 100**  
 Mon – Fri 9 to 6, Sat 9 to 1



### German Tech Cars

Car Servicing, Tyres, Exhausts  
**Clifton Road • 01223 750 285**  
 Mon – Fri 7.30 to 5.30, Sat 8 to 12 noon



### Giant Store

Bicycle Sales, Service  
**Hills Road**  
**01223 415 349**  
 Mon – Fri 8 to 6, Sat 9 to 5, Sun 10 to 4



### Halfords Autocentre

Car Servicing, Tyres, Exhausts  
**Clifton Road • 01223 249 608**  
 Mon – Fri 8 to 6, Sat 8 to 5



### Hertz

Car and Van Hire  
**Clifton Road • 0843 309 3015**  
 Mon – Thu 8.30 to 5.30, Fri 8 to 6,  
 Sat 9 to 1



### Kwik Fit

Car Servicing, Tyres, Exhausts  
**Adkins Corner • 01223 244 812**  
 Mon – Fri 8.30 to 6, Sat 8.30 to 5,  
 Sun 10 to 4



### MRH Orchard Service Station

Fuel Filling Station, Car Wash  
**Cherry Hinton Road (East)**  
**01223 400 100**  
 24 hours/day, every day



There are one-click links to all  
 the business websites (@) and  
 Facebook pages (f) at  
[queen-ediths.info](http://queen-ediths.info)



## Queen Edith's Favourite Window Cleaning Service

**Shortle Pro Clean**  
 Window Cleaning

- Professional, safe, fully insured
- Exterior and interior window cleaning
- State of the art pure water cleaning
- Gutter cleaning
- Fascia cleaning
- Patio cleaning
- Conservatory cleaning

Give us a try!  
**07803 578 357**

info@shortleproclean.co.uk  
[www.shortleproclean.co.uk](http://www.shortleproclean.co.uk)

# SERVICES

**Arco**  
Safety Clothing and Equipment  
Clifton Road • 0115 938 0402  
Mon – Fri 8 to 5, Sat 8 to 12 noon @

**Barclays Bank**  
Bank  
Clifton Road • 0345 734 5345  
Mon – Fri 9.30 to 4.30  
Addenbrooke's Hospital  
0345 734 5345  
Mon – Fri 8.30 to 4.30

**Barr Ellison**  
Legal Advisors  
Addenbrooke's Hospital  
01223 411 315 @  
Mon – Fri 9 to 5

**Betfred**  
Bookmakers  
Cherry Hinton Rd • 0800 028 7747  
Mon – Sat 9am to 10pm, Sun 9 to 8

**Broadway Dry Cleaners**  
Dry Cleaning  
Addenbrooke's Hospital  
01223 516 796  
Mon – Fri 8.30 to 5.30

**Cambridge Computer Centre**  
Computer Sales and Repair  
Cherry Hinton Rd • 01223 416 641 @  
Mon – Fri 9.30 to 5, Sat 10 to 5

**Cambridge Print & Copy**  
Printing and Copying  
Clifton Road • 01223 211 554 @  
Mon – Fri 9 to 6  
**See advertisement on page 5**

**Cambridge Veterinary Group**  
Vets  
Cherry Hinton Road  
01223 249 331 @  
Mon – Fri 8.30 to 6.30,  
Sat 8.30 to 12 noon

**Cambridge Violin Makers**  
Violin and Guitar Repair & Sales  
Hills Road (Hartington Ave)  
01223 411 071 @

**Coral**  
Bookmakers  
Adkins Corner  
Mon – Fri 9.30 to 10pm, Sat 9 to 8.30,  
Sun 10 to 6.30

**Custom Ink Tattooing**  
Tattooing  
Cherry Hinton Road  
01223 414 122 @  
Mon – Fri 11 to 6, Sat 11 to 4

**Dartington Wealth Management**  
Independent Financial Advisors  
Clifton Road  
01223 211 122 @

**DH Thomas Optometrists**  
Optometrists  
Hills Road • 01223 245 222 @  
Mon – Thu 9 to 5.15, Fri 8 to 4,  
Sat 9 to 2

**Footprint Signs & Graphics**  
Signs, Banners, Graphics  
Clifton Road • 01223 214 294 @  
Mon – Fri 8 to 4.30

**Helping Hands Home Care**  
Home Care Provider  
Wulfstan Way Shops  
01223 636 914 @

**Inheritance Legal Services**  
Will Writing, Estate Planning  
Cherry Hinton Road  
01223 795 050 @  
Mon – Fri 9 to 5

**Injury Active Clinic**  
Sports Injury Clinic  
Clifton Road  
0785 292 0129 @

**Jag Express**  
Courier Service  
Clifton Road  
01223 242 250 @

**Kall Kwik**  
Printing and Copying  
Clifton Road • 01223 502 502 @  
Mon – Fri 8.45 to 5.30

**Ladbrokes**  
Bookmakers  
Cherry Hinton Road  
0800 022 3454 @  
Mon – Fri 9 to 9, Sat 8.30am to 10pm,  
Sun 9.30 to 8

**Lloyds Bank**  
Bank  
Cherry Hinton Road  
0345 425 5260 @  
Mon, Wed, Fri 9 to 4.30

**Maggie's London**  
Clothes Buyer  
Cherry Hinton Road  
01223 213 100 @  
Mon – Fri 10 to 6, Sat 10 to 4

**Michael's**  
Shoes/Leather Goods Repairs  
Cherry Hinton Road  
01223 415 267 @  
Mon – Fri 9 to 5, Sat 9 to 1

**The Osteopathic Centre for Family & Children**  
Osteopathic Services  
Hills Road (South)  
01223 242 828 @  
Mon – Fri 9 to 5

**Pickfords**  
Self-Storage  
Clifton Road • 01223 247 888 @  
Mon – Fri 8 to 6, Sat 9 to 3.30

**Rosewood Joinery**  
Cabinet Makers, Joiners  
The Paddocks  
01223 508 777 @

**Royal Mail Service Point**  
Mail Delivery & Collection Office  
Clifton Road • 03456 021 021 @  
Mon – Tues 7.30 to 6.30, Wed 7 to 8,  
Thu – Fri 7.30 to 6.30, Sat 7 to 2, Sun 11 to 3

**Swiss Laundry**  
Dry Cleaning, Clothing Repairs and Alterations  
Cherry Hinton Road  
01223 868 429 @  
Mon – Tue 8.30 to 5.30,  
Wed 7.30 to 6.30, Sat 8.30 to 12.30

*Entries in this directory are free. Display advertising in the 2018 issues of 'Queen Edith's Community News' is offered at low cost. For details, please email [hello@queen-ediths.info](mailto:hello@queen-ediths.info)*

# CHEMISTS

**Boots**  
Pharmacy  
Cherry Hinton Road  
01223 247 567 @  
Mon – Fri 9 to 5.30, Sat 9 to 4

**Kays Chemist**  
Pharmacy  
Wulfstan Way Shops  
01223 242 687 @  
Mon – Tue 9 to 1, 2 to 6, Wed 9 to 1, 2 to 5.30, Thu – Fri 9 to 1, 2 to 6, Sat 9 to 1

**Numark Pharmacy**  
Pharmacy  
Adkins Corner  
01223 517 073 @  
Mon – Fri 7 to 11, Sat 7 to 7, Sun 9 to 5

# SUPERMARKETS & CONVENIENCE STORES

**Amigos Convenience Store**  
Convenience Store  
Addenbrooke's Hospital  
Mon – Fri 7.30 to 5.30

**Antoncroft Newsagents**  
Newsagents, Off-Licence  
Cherry Hinton Road  
01223 248 895 @  
Mon – Sat 7 to 5, Sun 7 to 11am

**Budgens**  
Supermarket  
Adkins Corner • 01223 246 082 @  
Mon – Sat 7 to 11, Sun 10 to 4

**Cherry Hinton Mini Market**  
General Stores, Newsagent  
Cherry Hinton Road  
01223 247 595 @  
Mon – Sat 6am to 10pm, Sun 7am to 10pm

**Cherry Hinton Rd Local Store**  
Post Office, Convenience Store  
Cherry Hinton Road  
01223 247 722 @  
Mon – Fri 9 to 5.30, Sat 9 to 1

**Co-op – The Marque**  
Supermarket  
Hills Road • 01223 211 629 @  
7 to 10, every day

**Essentialz**  
Convenience Store  
Hills Road • 01223 242 045 @  
Mon – Sat 6.30 to 11, Sun 7 to 11

**Express Convenience Store**  
Convenience Store  
Wulfstan Way Shops  
01223 242 449 @  
Mon – Sat 8 to 8, Sun 10 to 4  
**See advertisement below**

**Hursts at Orchard Service Station**  
Convenience Store  
Cherry Hinton Road (East)  
01223 400 100 @  
24 hours/day, every day

**M&H General Stores**  
General Stores, Newsagent  
Wulfstan Way Shops  
01223 248 723 @  
7.30 to 2.30, every day

**M&S Food**  
Food Store  
Addenbrooke's Hospital  
Mon – Fri 6.30am to 8.30pm,  
Sat 8.30 to 7.30, Sun 8.30 to 6.30

**New Winfield Oriental Supermarket**  
Asian Goods Traders  
Wulfstan Way Shops  
07476 645 387 @  
10.30 to 7.30, every day

**Sainsbury's Local**  
Supermarket  
Cambridge Leisure  
01223 246 781 @  
7 to 11, every day

**Sparkles**  
Convenience Store  
Cherry Hinton Road  
01223 211 494 @  
Mon – Sat 8 to 11.30, Sun 9 to 11.30

**Tesco Express**  
Supermarket  
Cambridge Leisure  
0845 675 7194 @  
6 to 11, every day



## Express General Store

- ✓ Fully stocked off-licence and tobacconist
- ✓ Italian, Indian, European and Philippine foods
- ✓ Huge range of groceries
- ✓ Home delivery for orders over £25
- ✓ myHermes ParcelShop
- ✓ Cash machine
- ✓ 'Free-From' products
- ✓ Fresh fruit/veg
- ✓ Lottery tickets
- ✓ Pay bills through Payzone

Drop by and see what Pam and the team have to offer!

**Wulfstan Way, Cambridge • 01223 242449**

8am–8pm Mon–Sat • 10am–4pm Sun, Bank Holidays

**At Your Convenience**

**Just around the corner!**

# PLACES TO EAT AND DRINK

## Balzano's

Delicatessen, Café  
**Cherry Hinton Rd • 01223 246 168**  
 Mon – Fri 8.30 to 5.30, Sat 8 to 4 @

## Bella Italia

Restaurant: Italian  
**Cambridge Leisure**  
**01223 247 099**  
 Mon – Fri 11.30 to 11, Sat 9 to 11, Sun 9 to 10

## Burger King

Restaurant and Takeaway: American  
**Addenbrooke's Hospital**  
 Mon – Fri 10 to 9, Sat – Sun 10 to 8

## Cambridge Cookery School

Café and Wine Bar  
**Hills Road • 01223 247 620** @ f  
 Mon – Fri 8 to 5, Sat 8am to midnight

See advertisement on Page 2

## Cambridge Wine Merchants

Wines and Spirits, Wine Bar  
**Cherry Hinton Rd • 01223 214 548**  
 Mon – Wed 11 to 9, Thu – Sat 11 to 10,  
 Sun 12 to 8 @

## Cherry Box Pizza

Takeaway: Pizza  
**Cherry Hinton Rd • 01223 511 929**  
 Mon – Sat 11 to 11, Sun 12 to 11 @

## Chicken Rush

Takeaway: Chicken  
**Hills Road • 01223 247 774**  
 Mon – Fri 11 to 11, Sat – Sun 11.30 to 11

## Chiquito

Restaurant: Tex-Mex  
**Cambridge Leisure**  
**01223 400 170**  
 Mon – Sat 9 to 11, Sun 9 to 10

## Costa Coffee

Café  
**Cherry Hinton Road**  
 Mon – Fri 7 to 7, Sat 7.30 to 6.30, Sun 8 to 6

## Costa Coffee

Café  
**Addenbrooke's Hospital**  
 Mon – Thu 24 hours/day, Fri to 9pm, Sat  
 7am to 8pm, Sun 7am to midnight

## Cyprus Kebab House

Takeaway: Kebab, Pizza  
**Cherry Hinton Rd • 01223 211 912**  
 12 to 11.30, every day @

## Double Seven

Takeaway: Chinese  
**Cherry Hinton Road**  
**01223 245 777**  
 Mon 12 to 2.30 and 5pm to 11, Wed – Sat  
 12 to 2.30 and 5pm to 11, Sun 12 to 2.30  
 and 5pm to 9.30 @

## Fish'n Chick'n

Takeaway: Fish and Chips, Chicken  
**Cherry Hinton Road**  
**01223 247 612**  
 Mon – Tue 11.30 to 2 and 4 to 10, Wed –  
 Sat 11.30 to 10, Sun 12 to 10 @

## Five Guys

Restaurant: American  
**Cambridge Leisure**  
**01223 211 130**  
 11 to 11, every day

## Frankie and Benny's

Restaurant: American  
**Cambridge Leisure**  
**01223 412 430**  
 Mon – Sat 9 to 11, Sun 9 to 10.30

## Gattuso's Restaurant

Restaurant: Italian  
**Hills Road • 01223 246 665**  
 Mon – Thu 11 to 2.30 and 5 to 10, Fri –  
 Sun 11 to 10 @ f

## Harpur's Café

Café  
**Cherry Hinton Road**  
**01223 508 012**  
 Mon – Fri 7 to 3, Sat 9 to 2 f

## Khangs

Takeaway: Chinese, Fish and Chips  
**Wulfstan Way Shops**  
**01223 248 722**  
 Mon 4 to 9, Tue – Sat 11.30 to 1.45 and  
 4.15 to 10

## Maharani Takeaway

Takeaway: Indian  
**Cherry Hinton Road**  
**01223 579 279**  
 Mon – Thu 5pm to 11, Fri – Sat 5pm to  
 11.30, Sun 5pm to 11 @ f

## Maido House

Takeaway: Chinese  
**Cherry Hinton Road**  
**01223 413 838**  
 Tue – Thu 5 to 10.30, Fri – Sat 5 to 11,  
 Sun 5 to 10.30

## Nando's

Restaurant: Chicken  
**Cambridge Leisure**  
**01223 246 568**  
 Mon – Thu 12 to 11, Fri 12 to 11.30, Sat  
 11.30 to 11.30, Sun 12 to 11 @

## New Golden Buddha

Takeaway: Chinese, Grill  
**Cherry Hinton Rd • 01223 249 249**  
 Mon 12 to 2 and 5pm to 11, Wed – Sat 12  
 to 2 and 5pm to 11, Sun 5pm to 11 @

## Nines Global Buffet

Restaurant: Global  
**Cambridge Leisure**  
**01223 244 277**  
 Mon – Thu 12 to 3 and 5 to 10.30, Fri 12  
 to 3 and 5 to 11, Sat 12 to 4 and 4.30 to  
 11, Sun 12 to 4 and 4.30 to 10.30 @ f

## Peking Restaurant

Restaurant and Takeaway: Chinese  
**Hills Road • 01223 245 457**  
 12 to 2.30 and 6 to 10.30 @ f

## Pickwick's Sandwich Bar

Takeaway: Sandwiches and Coffee  
**Cherry Hinton Rd • 01223 249 838**  
 Mon – Fri 7.30 to 3, Sat 9 to 2

## Restaurant Alimentum

Restaurant: Modern European  
**Hills Road • 01223 413 000**  
 Mon – Sat 12 to 2 and 6 to 9.30, Sun 12  
 to 2 and 6 to 9 @

## Rocker's Steakhouse

Restaurant: American  
**Cambridge Leisure**  
**01223 247 777**  
 Mon – Thu 12 to 10.30, Fri – Sat 12 to 11,  
 Sun 12 to 10 @ f

## Shahi Balti

Takeaway: Indian  
**Cherry Hinton Rd • 01223 247 501**  
 5pm to 11, every day @

## Spice of Life

Takeaway: Food and Snacks  
**Addenbrooke's Hospital**  
 24 hours/day, every day

## Starbucks

Café  
**Addenbrooke's Hospital**  
 Mon – Thu 7 to 7, Fri to 7 to 6, Sat 9 to 6,  
 Sun 10 to 6 @

## Subway

Takeaway: Sandwiches  
**Cambridge Leisure**  
**01223 246 500**  
 Mon – Thu 7 to 11, Fri 7 to 12,  
 Sat – Sun 10 to 10

## Taj Tandoori

Restaurant and Takeaway: Indian  
**Cherry Hinton Road**  
**01223 248 063** @ f  
 Mon – Thu 5.30pm to 11.30, Fri – Sat  
 5.30pm to 12, Sun 5.30pm to 11.30

See advertisement on Back Cover

## The Baguette Co

Takeaway: Food and Snacks  
**Addenbrooke's Hospital**  
 Mon – Fri 7.30 to 6, Sat 10 to 4,  
 Sun 12 to 6

## The Coffee House

Café  
**Wulfstan Way Shops**  
**07763 652 171**  
 Mon – Fri 8 to 4, Sat 9 to 1 @ f

## The Dumpling Tree

Restaurant and Takeaway: Chinese  
**Hills Road • 01223 247 715**  
 11.30 to 9.30, every day @

## The Green Room

Bar, Café  
**Cambridge Leisure**  
**01223 612 210**  
 10 to 10, every day @ f

## The Queen Edith

Pub, Restaurant  
**Wulfstan Way Shops**  
**01223 244 536**  
 Mon – Thu 12 noon to 11,  
 Fri – Sat 12 to 12, Sun 12 to 10.30 @ f

## The Rock

Pub, Restaurant: Flame Grill  
**Cherry Hinton Road**  
**01223 505 005**  
 Mon – Tue 11 to 11, Wed – Sat 11 to 12,  
 Sun 11 to 11 @ f

## Vino E Sapori

Restaurant: Italian  
**Cherry Hinton Road**  
**01223 478 598** @

# ESSENTIAL INFORMATION FOR QUEEN EDITH'S RESIDENTS

## Emergency Calls

In any emergency, call **999**. For serious and life-threatening injuries and conditions, the nearest medical Emergency Department for Queen Edith's is at Addenbrooke's Hospital.

## Alternatives to A&E/ Pharmacies

For non-emergency problems, seek advice from your GP or pharmacy, or call the NHS **111** phone service, where a nurse will give confidential advice 24 hours a day. The closest pharmacies are listed at the top of page 13. Further afield, the pharmacies at Sainsbury's (Coldham's Lane), Tesco ('Fulbourn' store) and Asda (Beehive Centre) are open until late most nights.

## Non-Urgent Crime

To report less urgent crime or disorder, or to contact the police with a general enquiry, dial **101** at any time. The system will connect you with the local police for this area.

## Problem Parking

To report possible illegal parking, contact the county council's parking services team on **01223 727 900**. Serious offences should be referred to the police.

## What's On in Queen Edith's

The free, Friday night *What's On In Queen Edith's* email is a must for every resident. Go to the [queen-ediths.info](http://queen-ediths.info) website now and add your email address to our list.

## About Us

*Queen Edith's Community News* is published by the Queen Edith's Community Forum, the neighbourhood association for the area. Chair: Sam Davies. More information at the [queen-ediths.info](http://queen-ediths.info) website.

## Smell gas? No electricity?

To report a gas emergency, call the National Gas Emergency Service on **0800 111 999**. To report a power cut, call UK Power Networks on **0800 31 63 105**.

## Rock Road Library

Our local library is open Monday 9am to 1pm; Tuesday 9am to 5pm; Thursday 9am to 5pm; Friday 3pm to 6pm; Saturday 10am to 2pm. Closed Wednesday and Sunday.

## Queen Edith's Councillors

The *City Council* deals with planning, housing, leisure and rubbish collection. Our city councillors are **Tim Moore** on **01223 575 218**, **Jennifer Page-Croft** on **01223 729 492** and **George Pippas** on **01223 473 223**. The *County Council* deals with schools, libraries, social services, roads, waste disposal, streetlighting and trading standards. Our county councillor is **Amanda Taylor** on **01223 249 787**. Councillors hold drop-in 'surgeries' at St James's Church or The Coffee House nearby at 10.15am on the second Saturday of each month, and at Rock Road Library at 5.15pm on the fourth Friday.





# The new-look Taj Tandoori is now better than ever!

The many regular diners at the **Taj Tandoori** on Cherry Hinton Road flocked back this summer, when the area's favourite Indian restaurant re-opened after a major refurbishment. It was well worth the wait. This city has an amazing selection of restaurants, but there's a reason why the Taj Tandoori is **number one Indian restaurant in Cambridge on the TripAdvisor website** – customers love it!

The restaurant has been part of the Queen Edith's scene for over 30 years, which means managers Amin and Julal Syed know exactly what locals want. This includes creating what they call "honest, fresh, flavoursome food" and providing "what we hope is the friendliest and most welcoming service possible."

New decor features colourful paintings and ornaments sourced from street markets in India, making the place looking as diverse and cultured as the countries where its cuisine originates.

## Bring Your Own

Buying drinks in a restaurant can cost you as much as the meal itself, but another popular feature at the Taj is the venue's 'bring your own' policy. Whether you're looking to save a few pounds or you've got something reserved for a special occasion, the Taj lets you bring your own wine or beer – and there's no charge for small tables. Soft drinks, including a wonderful mango lassi, are available to purchase.



*The Taj Tandoori, Cherry Hinton Road: the number 1 Indian restaurant in Cambridge on TripAdvisor is just around the corner!*

The restaurant is surprisingly large, seating up to 80, but its popularity is such that regulars know it is wise to book in advance. The Taj is wheelchair-friendly. Immediately on re-opening, it received a 'good' food hygiene rating from the City Council. Takeaway is available, with a 10% discount available for orders through the restaurant's website. There's also home delivery via Deliveroo.

*Advertisement feature. The Taj Tandoori is a supporter of the Queen Edith's Community Forum.*

**Taj Tandoori**

**64-66 Cherry Hinton Road**

**01223 248063**



**TAJ**

**Opening Times**

**Sun – Thurs: 5.30pm to 11.30pm**

**Fri – Sat: 5.30pm to Midnight**

**[www.tajtandooricambridge.co.uk](http://www.tajtandooricambridge.co.uk)**